



Vibes Agriwarehouse - Ventilation

FEATURES

This measures the adequacy of ventilation within the warehouse so that aeration is maintained.

TECHNICAL SPECIFICATION

Vibes - Ventilation	
Power Supply	USB Powered (Type - C) / 24V DC
Processor	32-bit 144 MHZ ARM Cortex M4F processor
Connectivity	Wired - RS485, Wi-Fi - HTTP / MQTT / any other
Antenna	Internal antenna with 2.5 DBI max gain
Operating temperature	-40°C ~ +85°C
Ingress Protection	IP 54
Sensors Specification	
Accuracy	±3%
Range	-10 to 200slm (can detect reverse flow)
Resolution	16 bit



Humidity	Condition	Value	Unit
Accuracy tolerance	Typ.	±2.0	%RH
	Max.	Below Graph	%RH
Repeatability	-	0.1	%RH
Resolution	-	0.01	%RH
Hysteresis	-	±1	%RH
Specified range	extended	0 to 100	%RH
Response time	τ 63%	8	S
Long-term drift	Typ.	<0.25	%RH/y

Temperature	Condition	Value	Unit
Accuracy tolerance	Typ.	±0.2	°C
	Max.	Below Graph	°C
Repeatability	-	0.1	°C
Resolution	-	0.01	°C
Specified range	-	-40 to +125	°C
Response time	τ 63%	<5 to 30	s
Long-term drift	Typ.	<0.02	°C/y

Firmware & Wireless Communication Features:

- Transmit the value either wired and wirelessly through RS485 and HTTP/MQTT endpoint.
- Firmware can be updated for HTTP/MQTT Endpoints on Azure /AWS or as required by OEM.
- Firmware can be also modified remotely via FOTA.
- Configurable through App to wireless network of your choice assigning network credentials requiring both username and password.
- Configure Endpoint Server Credentials through App
- Instantaneous values and Device performance can be monitored by App by force logging to the device.

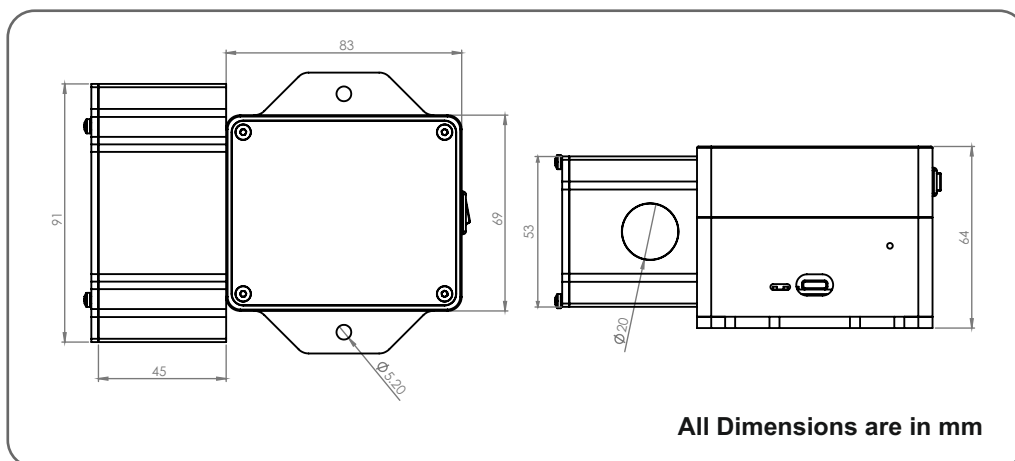
Vibes Configurator App

Data View

If Used on Wi-Fi

If Used on RS-485

DIMENSION DETAILS



Specifications are subject to change without Prior notice