




Our Domain Expertise for Digital Twin




Connect



Monitor




Control




Digital Twin


Detection, measurement, analysis of physical parameter measurement




Force




Displacement



Torque




Pressure




Temperature

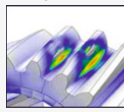
Augmented analytics for fast, predictive and insightful engineering.




Stress



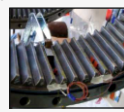
Strain



Gear Tooth Mesh



Torsional Deflections



Strain Gauging

SeethaRam Mechatronics Pvt Ltd provides products and solutions for IOT Ecosystem. Apart from catalog offerings, you may contact us for OEM Solutions, Sub-Systems, Import Substitution from design to manufacturing.

Few Customers





Intelligent Workshops

Intelligent & Connected Workshops

Asset Management in Workshops/Factories



Production Machines



Testing Machines



Material Handling Equipment



Fixed Assets



Emergency Equipments



Training Equipment & Simulators



Remote Asset Tracking



Asset Health/
Condition Monitoring



Asset Lifecycle Management



Bridging Gaps



SeethaRam

Mechatronics Pvt Ltd



Connect

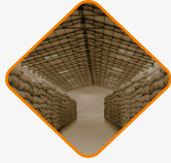


Monitor



Control

Our Solutions



AgriWarehouse
Ambient Condition Monitoring for warehouse



Agriculture
Soil & Ambient Condition Monitoring for Agriculture make Digital Agriculture easy



Healthcare Industry
Ambient Condition Monitoring in Healthcare Industry

Vibes

Span
Structural Monitoring of Bridges



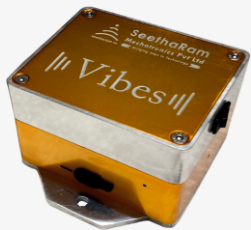
Maintenance
Condition Monitoring for Rotating Machines



Our IIoT Platform - An Overview Vibes & Views

Vibes is the hardware (Sensor Node, Edge Devices) that brings the last-mile data from the field machinery to the data stream.

<p>Build quality</p> <p>Tough Industrial Grade Aluminium Enclosure</p>	<p>USB - C</p> <p>User friendly & Latest Gen</p>	<p>High Resolution Sensor</p> <p>Connected with high resolution & reliable sensors</p>	<p>Truly wireless</p> <p>No need of extra gateway</p>	<p>Multi Protocol</p> <p>Support both HTTP & MQTT</p>	<p>FOTA Updates</p> <p>Enable Vibes upgrade the firmware remotely & seamlessly</p>
---	---	---	--	--	---

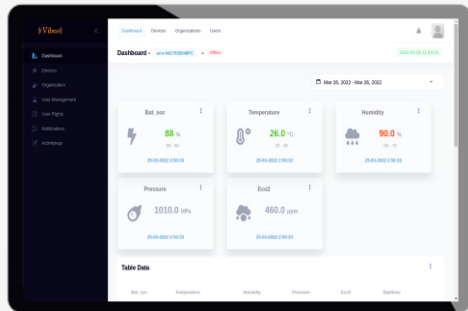


User Friendly Device Configurator App
Easily configure Vibes with cloud server and also can view device data locally on App Dashboard

<p>Vibes Configuration</p> <p>Dashboard</p> <p>Vibes-Eco Dashboard</p> <p>TEMPERATURE 26.48 °C</p> <p>HUMIDITY 85.18 %</p> <p>USE 336.84 lx</p> <p>MOTION Motion Detected</p>	<p>Views Configuration</p> <p>Configure</p> <p>Wi-Fi Credentials</p> <p>SSID</p> <p>Password</p> <p>Configure Server Details</p> <p>Server Address</p> <p>Server Port</p> <p>Write Key</p> <p>Read Key</p> <p>Foundation IP</p> <p>Working Interval</p> <p>Logging Interval</p>
---	--

Views is a browser-based solution which enables a ready dashboard for all types of VIBES IoT Devices registered online.

Multi Protocol	Multi-view Dashboard	Data Log	Data Set Points
Event / Push Notifications	User Rights Management	Activity Logs	



Intelligent & Connected Workshops

Modernized Workshops require data on every Asset in the plant. Data v.i.z it's location, KPIs, Health Condition and many other critical inputs than can enable compute Asset Reliable Lifecycle Management. This enables the Factory Manager and the Senior Management to have a bird's eye view on the **Overall Equipment Effectiveness (OEE)** & Profitability of the assets in Workshop. Asset Management, Connected Machinery on IoT makes the intelligent data available on cloud and data historian of Events and Policy Execution. This evolved Data over reasonable time frame is the greatest input for any informed decision making and evaluation.

Remote Asset Tracking, Asset Health/Condition Monitoring, Asset Lifecycle Management can pave way to further automation as Predictive & Preventive Maintenance and link Material Management & Asset Workflow Automation. Our solutions can bring in data and visualization for:

Asset Management in Workshops/Factories



Remote Asset Tracking: Retrieve information on the various assets anytime, anywhere.

- Asset Location & Listing
- Availability indicators.
- Functional indicators.
- Reliability indicators.

Asset Condition Monitoring: Cost-efficient and proactive method to evaluate the various health indicators, performance thresholds, associated risks, events, and recommendations for improved asset health.

Asset Lifecycle Management: Comprehensive record of asset portfolio optimizing the profit generated by the various assets throughout their lifecycle.

Discovery Value Assessment (DVA)... Starting the Journey

