

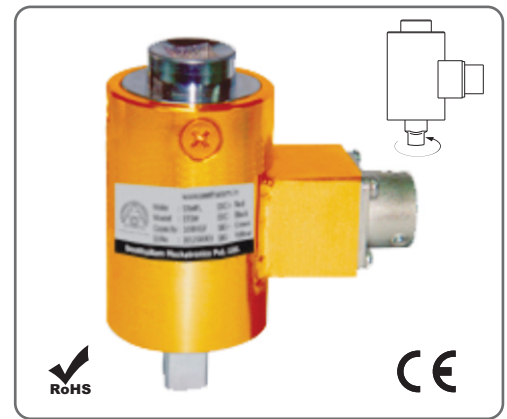
NON - ROTARY TORQUE TRANSDUCER

FEATURES

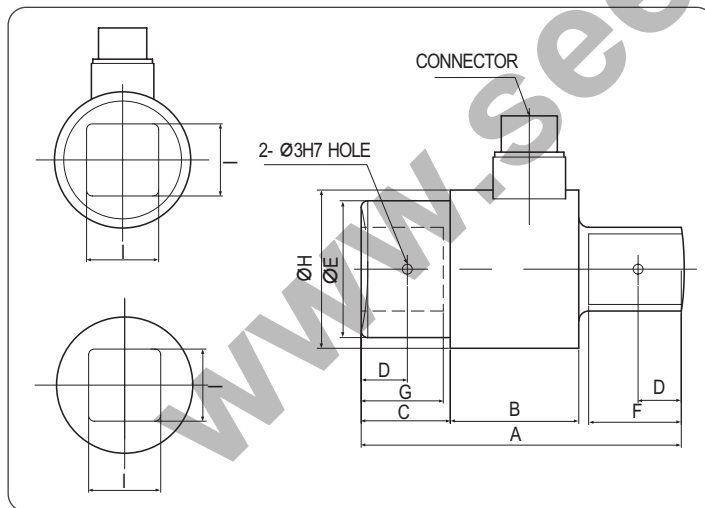
- Adaptable for portable usage
- No special adapter tools required
- Precision repeatable torque measurements
- Calibration reference for 'hard usage' mechanical torque wrenches

TECHNICAL SPECIFICATION

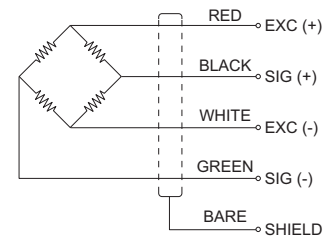
Model	STSW
Rated Capacity (R.C)	2,5,10,20,50,100,200,500,100kgf.cm
Rated output (R.O)	1mV/V ± 1%
Non-linearity	0.3% of R.O.
Hysteresis	0.3% of R.O.
Repeatability	0.2% of R.O.
Excitation recommended	10VDC
Terminal resistance, input	350Ω ± 30Ω
Terminal resistance, output	350Ω ± 2Ω
Insulation resistance bridge	2000MΩ
Temp. range, compensated	-10°C ~ 60°C
Temp. range, safe	-10°C ~ 80°C
Safe overload	120% R.C.
Cable length	Ø5, 4core 5m



DIMENSION DETAILS



WIRING INFORMATION



DIMENSION TABLE

Unit : mm

Capacity	A	B	C	D	ØE	F	G	ØH	I
2 kgf.cm	58	33	12	4	14	11	11	28	6.35
5, 10kgf.cm	60	33	13	5.5	16.5	12.5	12	28	9.53
20, 50kgf.cm	60	33	13	5.5	16.5	12.5	13	28	9.53
100, 200 kgf.cm	71	37	16	7	22	16	17	28	16
500, 1000kgf.cm	98	39	27	14	41.5	29	27	48	25.4

Specifications are subject to change without Prior notice