

Shaft Type Rotary Torque Transducer

FEATURES

- Nominal torque from 1 N·m ... 5000 N·m
- High accuracy 0.1% f. scale
- Drive-square socket
- Output-square drive
- Very short axial length
- High torsional stiffness
- Reliable and durable
- Simple handling and assembly
- Special versions on request



TECHNICAL SPECIFICATION

Model	RTSW (M)
Accuracy Class	0.1% F.S
Repeatability	±0.05% F.S
Excitation Voltage	12 VDC(max 15VDC)
Bridge resistance	350Ω
Sensitivity	1mV/V(1N.m;0.5mV/V)±0,1%
Reference temperature	23°C
Nominal temp. range	5 ... 50°C
Service temp. range	-10 ... 60°C
Temperature coeff. of zero signal	±0.04% F.S./K
Temperature coeff. of sensitivity	±0.02% F.S./K
Service torque	150% F.S.
Limit torque	200% F.S.
Ultimate torque	>300% F.S.
Durability of brushes	5x10 ⁷ Rev
Band width	70% F.S (Peak to Peak)
Level of protection	IP50
Electrical Protection	6Pin

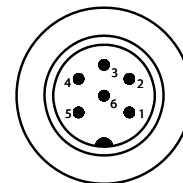
ELECTRICAL CONNECTION

6 Pin Connector

Pin 1 - Exc(-) Pin 4 - Sig(+)

Pin 2 - Exc(+) Pin 5 - Sig(-)

Pin 3 - Shied Pin 6 - Control Signal



Top View

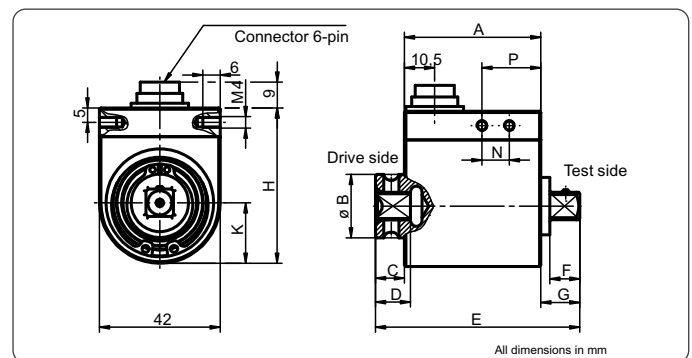
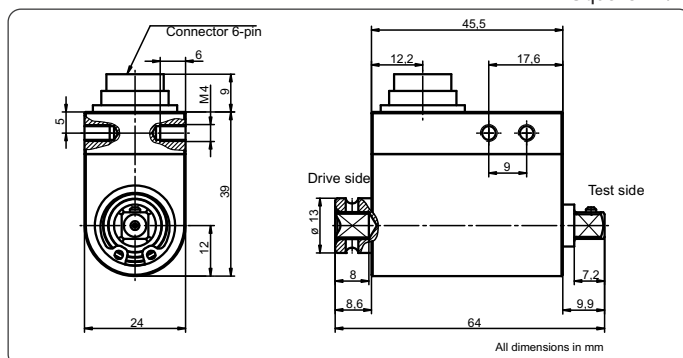
OPTION

- Control signal 100% F.S

DIMENSION DETAILS

Torque Range: 1, 2, 5, 12 Nm

Square : 1/4"

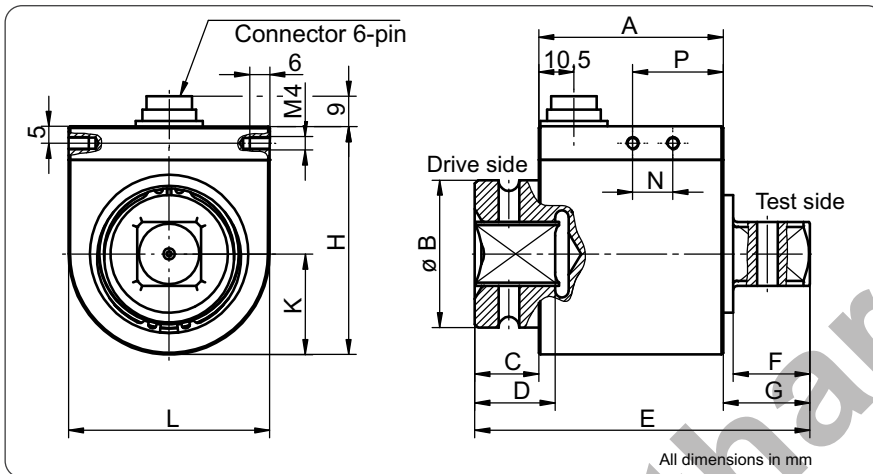


DIMENSION TABLE

Unit : mm

Torque (Nm)	Square	A	ØB	C	D	E	F	G	H	K	L	N	P
25/63	3/8"	47.4	22	10.1	12.2	71	10.4	13.5	54	21	42	9.5	20.5
100/160/120	1/2"	47.4	29.8	10.7	15	76	15.1	17.9	54	21	42	9.5	20.5

DIMENSION DETAILS



DIMENSION TABLE

Unit : mm

Torque (Nm)	Square	A	ØB	C	D	E	F	G	H	K	L	N	P
500	3/4"	55	44	19	24	100	22.9	26	68	30	60	12	27
1000	1"	55	54	33	27	132	27.4	44	68	30	60	12	27

DIMENSION DETAILS

Torque Range: 2000, 5000 Nm

Square : 1 1/2"

