

Rotary Torque Transducer

FEATURES

- Active output $\pm 5V$
- Sample rate 10 ksample
- Nominal torque from 0.1 N·m ... 20000 N·m
- Speed up to 15000 min⁻¹
- Very short axial length
- High torsional stiffness



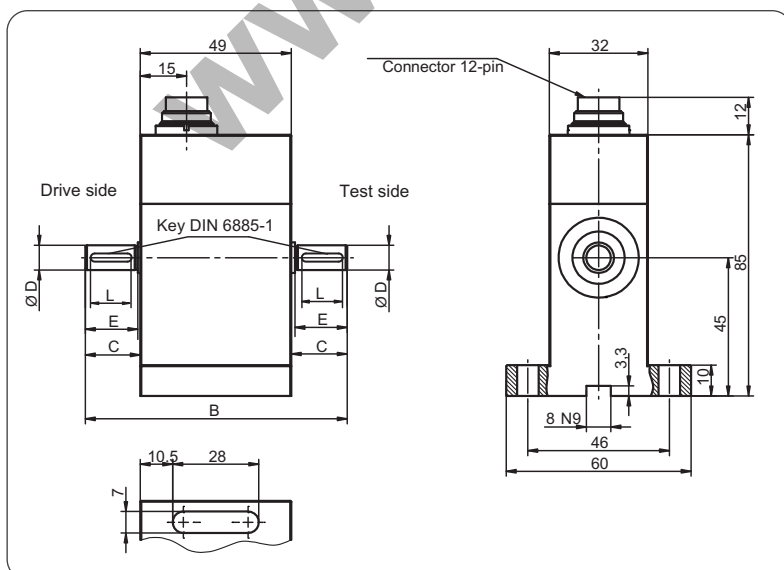
TECHNICAL SPECIFICATION

Model	RTDS3
Accuracy Class	0.2 (0.1)% F.S
Repeatability	$\pm 0.02(\pm 0.04)\%$
Excitation voltage	12...28V DC
Current consumption	<60 mA
Output signal	0... $\pm 5V$
Output current max.	5 mA short circuit resist
Calibration control	L<2,0; H>3,5V
Sample rate	10 kSample
Reference temperature	+23°C
Nominal temperature range	+5...+45°C
Service temperature range	0...+60°C
Storage temperature range	-10...+70°C
Temp. coeff. of sensitivity	$\pm 0.01(\pm 0.015)\%$ F.S.
Temp. coeff. of zero signal	$\pm 0.02(\pm 0.03)\%$ F.S.
Service torque (static)	150% F.S.
Limit torque (static)	200% F.S.
Ultimate torque (static)	>300% F.S.
Band width	70 (peak - peak)
Level of protection	IP50
Electrical connection	12 Pin series
Speed control (Option)	6 Impulses
Output signal (Options)	0... $\pm 10V$

ELECTRICAL CONNECTION

8-PIN	RTDS3
Pin A	NC
Pin B	Opt. angle B
Pin C	Signal (+)
Pin D	Signal (GND)
Pin E	Excitation (GND)
Pin F	Excitation (+)
Pin G	Opt. angle A
Pin H	NC
Pin J	NC
Pin K	Calibration Control
Pin L	NC
Pin M	Shield

DIMENSION DETAILS



Specifications are subject to change without Prior notice

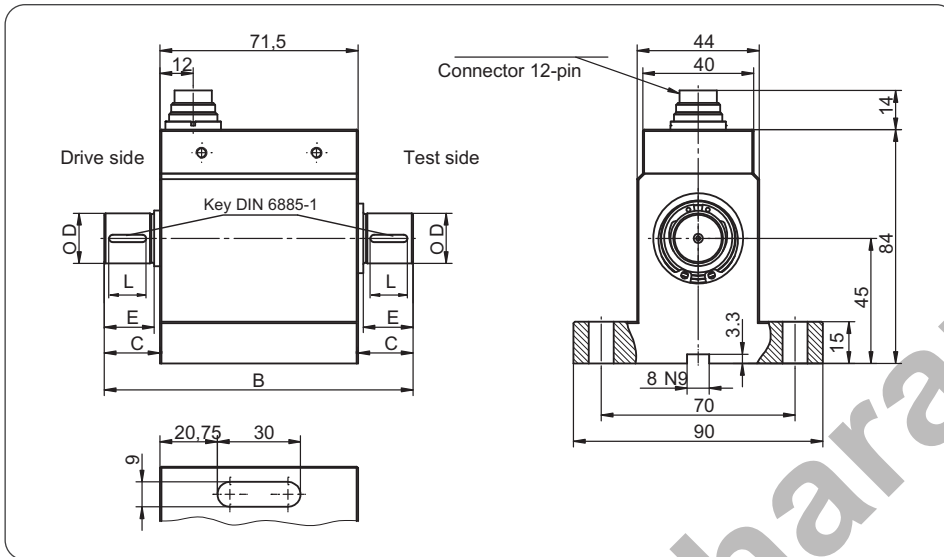
Rotary Torque Transducer

DIMENSION TABLE

Dimensions : mm

Measuring Range	B	C	D	E	L	Key Way
0.1, 0.2, 0.5, 1	85	18	8g6	17	14	2 x 2 x 14

DIMENSION DETAILS

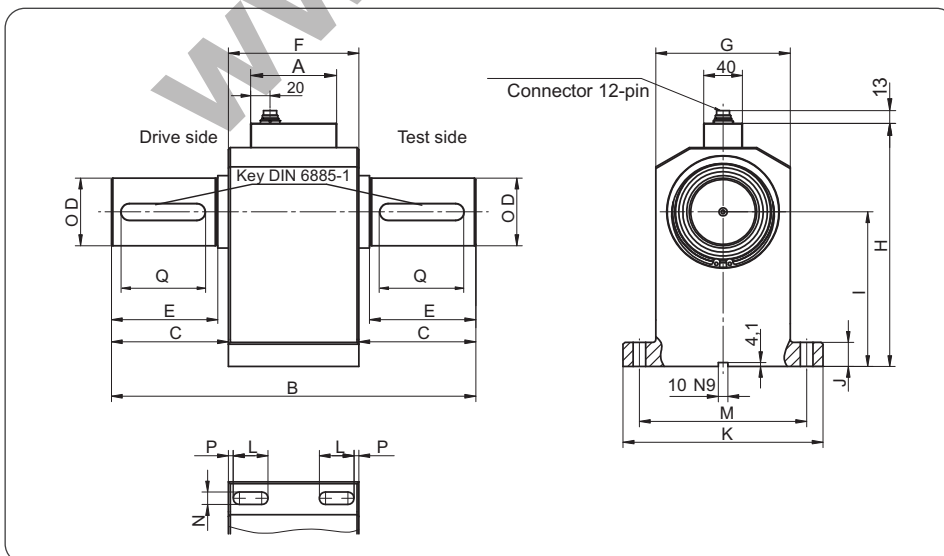


DIMENSION TABLE

Dimensions : mm

Measuring Range	B	C	D	E	L	Key Way
2, 5	107.5	18	8g6	17	14	2 x 2 x 14
10	107.5	18	10g6	17	14	3 x 3 x 14
20, 30	111.5	20	18h6	18	14	6 x 6 x 14
50, 100	147.5	38	18g6	36	30	6 x 6 x 30

DIMENSION DETAILS

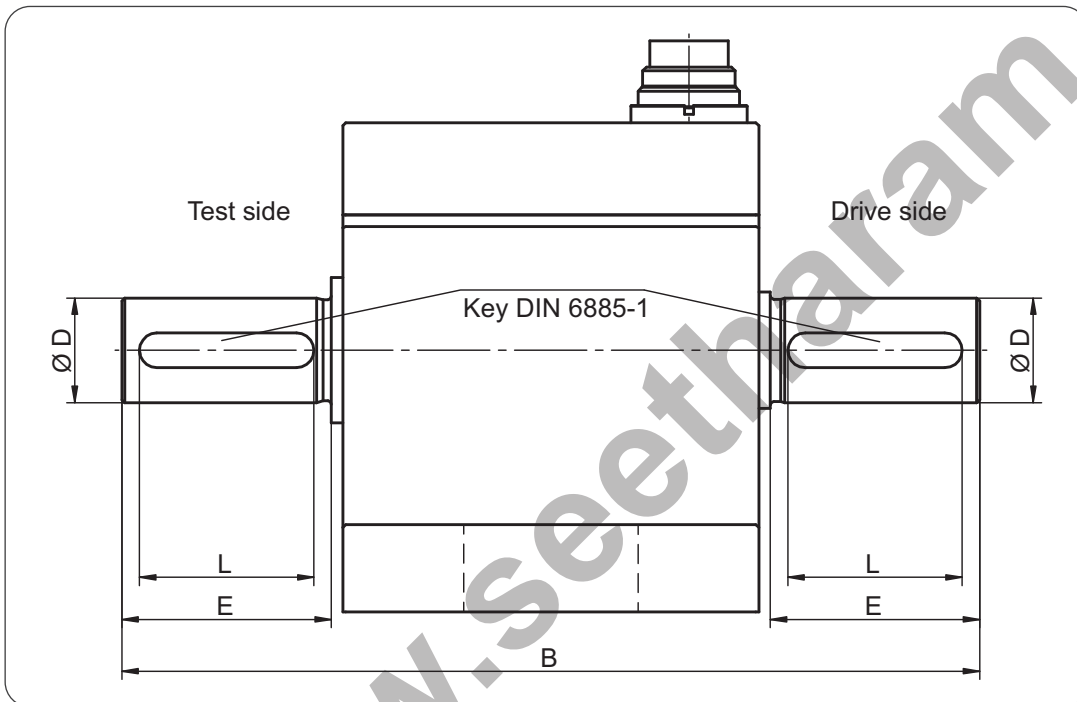


Rotary Torque Transducer

DIMENSION TABLE

Dimensions : mm

Measuring Range	A	B	C	ØD	E	F	G	H	I	J	K	L	M	N	P	Q	Key Way
200, 500	89	217	43.5	32 g6	38	130	115	190.4	112	20	175	30	145	11	5	36	10 x 8 x 36
1000	89	262	66	50 g6	58	130	115	190.4	112	20	175	30	145	11	5	50	14 x 9 x 50
2000*, 5000*	89	377	121	70 g6	110	135	139	251.5	160	25	207	36	173	13	5	100	20 x 12 x 100
10000*, 20000*	89	470	140	110 g6	120	190	210	343	215	40	300	45	260	17	15	160	28 x 16 x 160



DIMENSION DETAILS

Measuring Range N.m	B	ØD	E	L	Key Way
0.1, 0.2, 0.5,	85	8 g6	17	14	2 x 2 x 14
1, 2, 5	107.5	8 g6	17	14	2 x 2 x 14
10	107.5	10 g6	17	14	3 x 3 x 14
20, 30	111.5	18 g6	18	14	6 x 6 x 14
50, 100	147.5	18 g6	36	30	6 x 6 x 30
200, 500	217	32 g6	38	36	10 x 8 x 36
1000	262	50 g6	58	50	14 x 9 x 50
2000, 5000	377	70 g6	110	100	20 x 12 x 100
10000, 20000	570	110 g6	170	160	28 x 16 x 160