

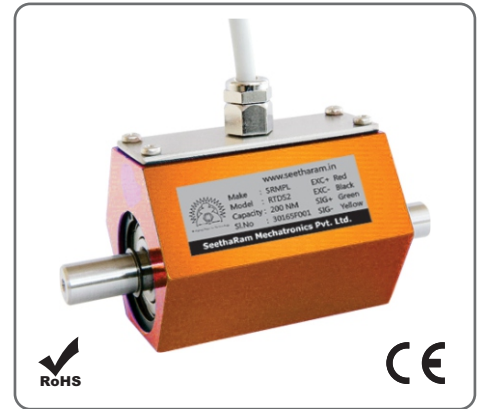
Shaft Type Rotary Torque Transducer

FEATURES

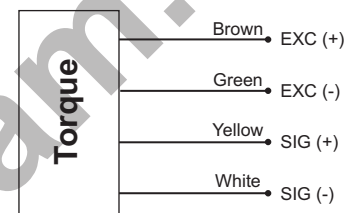
- Contactless signal transmission
- Maintenance free
- Cut off frequency: 1kHz
- Active output signal $\pm 5V$, (Option $\pm 10V$)
- Dual Shaft without key

TECHNICAL SPECIFICATION

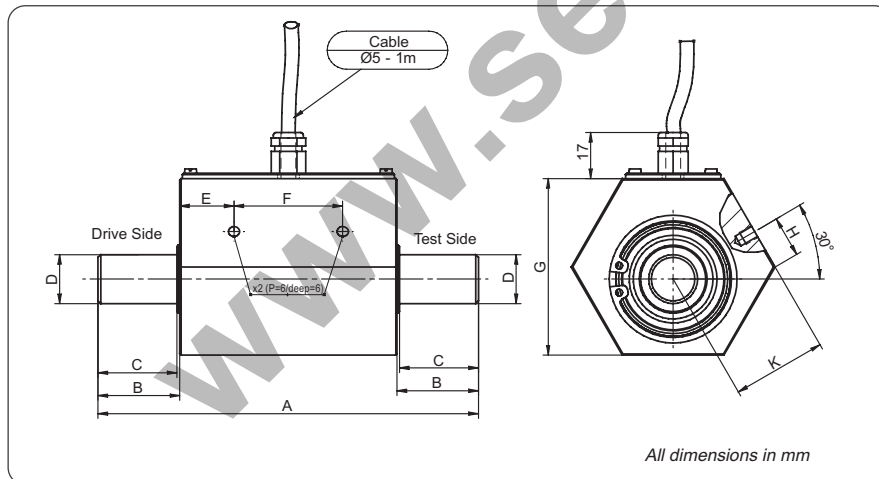
Model	RTDS2
Accuracy Class	0.25% F.S.
Repeatability	$\pm 0.05\%$ F.S.
Cut off frequency	1 KHz (-3 dB)
Supply Voltage	12...28 VDC
Output Signal	$\pm 5V$, (Option $\pm 10V$)
Current Consumption	max 50mA
Service torque	150% F.S.
Limit Torque	180% F.S.
Ultimate torque	>250% F.S.
Nominal temperature range	+5...+45 °C
Service temperature range	0...+60°C
Temperature coefficient of sensitivity	$\pm 0.02\%$ F.S/°C
Temperature coefficient of zero signal	$\pm 0.04\%$ F.S/°C
Level of protection (DIN 40 050)	IP50



WIRING INFORMATION



DIMENSION DETAILS



DIMENSION TABLE

Torque (Nm)	Unit : mm									Threaded holes
	A	B	C	ØD	E	F	G	H	K	
0.2, 0.5, 1, 2	100	18	17	8 g6	14.5	35	46	8	26	M4
5, 10	100	18	17	10 g6	14.5	35	46	8	26	M4
20, 50	140	30	29	18 g6	20	40	65	15	34.8	M5
100, 200	160	40	39	22 g6	20	40	65	15	34.8	M5