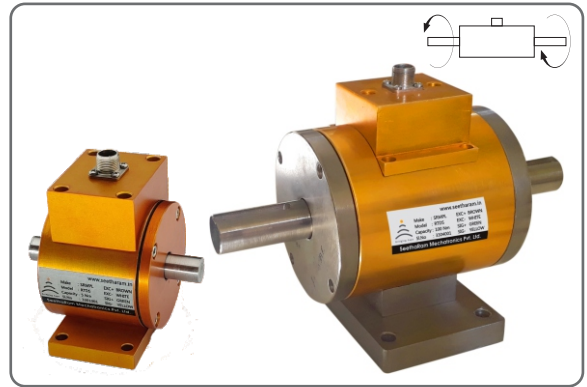


Shaft Type Rotary Torque Transducer

FEATURES

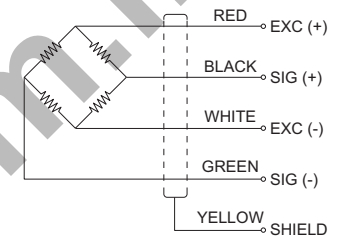
Model RTDS torque sensor measures the torque of continuous rotating object. High Integrity Contact material connector provides long term signal stability and high accuracy. These models are most appropriate for industrial measurement. Applications include the performance testers for automotive components such as clutch, transmissions, motors and pumps. Option: Foot mount.



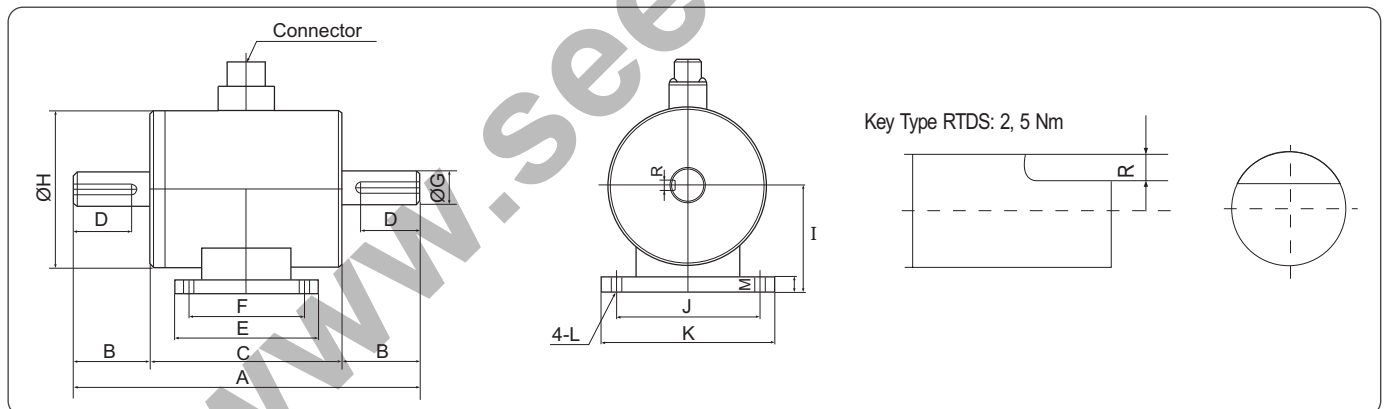
TECHNICAL SPECIFICATION

Model	RTDS
Rated Capacity (R.C)	2Nm ~ 2000Nm
Rated output (R.O)	1.5mV/V ± 1%
Non-linearity	0.3% R.O
Hysteresis	0.3% R.O
Repeatability	0.2% R.O
Excitation recomandad	10V
Terminal resistance	350Ω ± 5%
Insulation resistance bridge	200MΩ
Temp. effect on rated output	0.3% R.O./10°C
Temp. effect on zero balance	0.2% Load/10°C
Safe overload	120% R.C.
Cable	Ø5mm, 4core shield cable, Length 2m

WIRING INFORMATION



DIMENSION DETAILS



DIMENSION TABLE

Unit : mm

Capacity	A	B	C	D	E	F	ØG	ØH	I	J	K	ØL	M	R	R.P.M
2, 5 Nm	84	16	52	12	42	32	12	60	34	65	76	5.5	8	1.5	3000
10, 20, 30 Nm	90	16	58	12	46	32	18	72	41	80	94	6.5	8.5	5x5	5000
50, 100 Nm	180	42.5	95	35	64	50	18	80	58	80	100	7	12	5x5	5000
200, 500 Nm	220	55	110	45	100	84	32	100	63	98	115	7	12	10x8	4000
1000, 2000 Nm	280	80	120	69	120	98	47	100	66	124	148	8.5	15	12x8	4000
3000, 5000, 10000Nm	390	130	130	100	126	100	90	172	115	154	180	11	20	25x14	2000
20000 Nm	440	150	140	120	148	110	115	210	130	190	228	13	23	32x18	2000

Specifications are subject to change without Prior notice