

# Multi Components Load Cell

## Multi Components Load Cell

### FEATURES

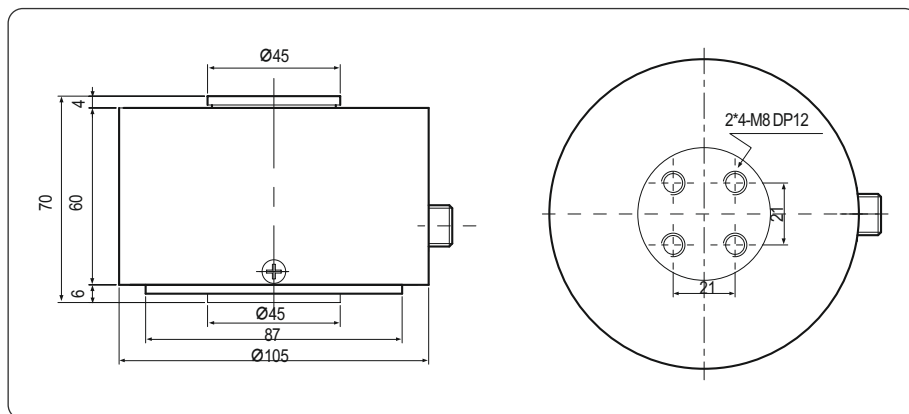
This is load cell of simple construction for torque and axial force detection. Provided with a flange for easy installation. Most suitable for use in materials testing machines.

### TECHNICAL SPECIFICATION

Model	MAS-700
Rated output(R.O.)	FX: 0.2mV/V FY: 0.2mV/V MZ: 1.7mV/V
Nonlinearity	0.5% R.O.
Hysteresis	0.5% R.O.
Repeatability	0.1% R.O.
Excitation recommended	5V DC (max. 10V DC)
Terminal resistance	350 Ohm±3.5
Insulation resistance bridge	2000 M
Temp. effect on rated output	±0.03% R.O./°C
Temp. effect, on zero balance	±0.03%/°C
Safe overload	120% R.C
Cable length	(Ø4mm x 4C x 2m) x 3
Degree of interference	±3% R.O.



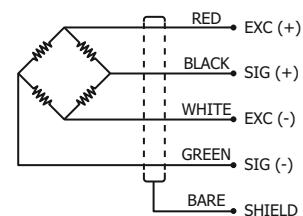
### DIMENSION DETAILS



**F - Force : N**  
**M - Moment : Nm**

MODEL	Rated Capacity			
	FX	FY	MZ	
MAS-700	15	150	150	15

### WIRING INFORMATION



Specifications are subject to change without Prior notice