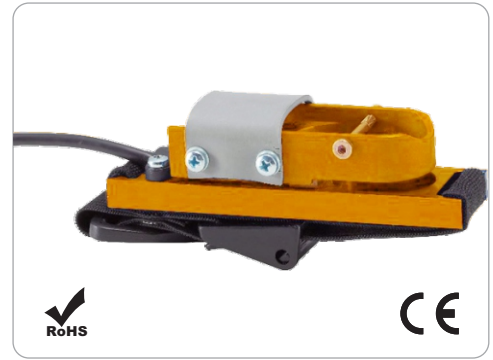


Hand Brake - HB

The hand brake sensor for two-wheelers is used for measurement of the forces on the handbrake lever of motor cycles and bicycles. The readings can be read off from strain indicator.

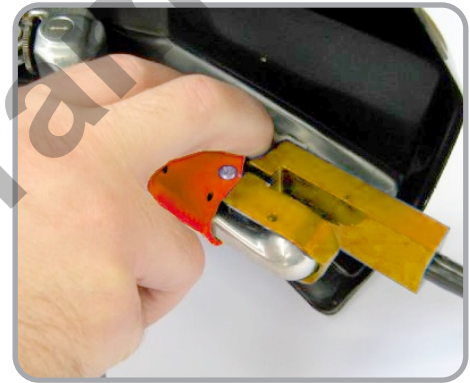


FEATURES

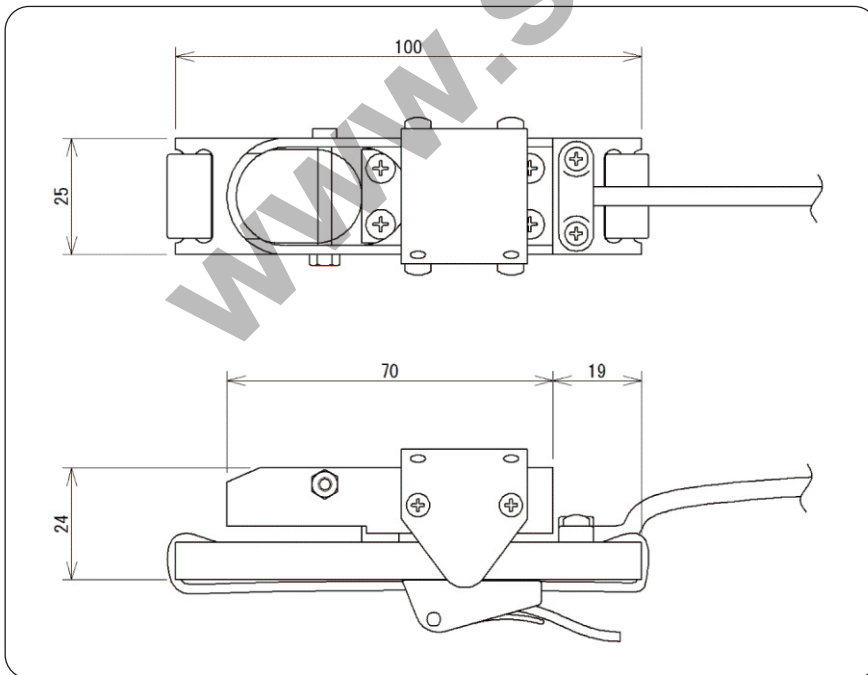
- Nominal load - two-wheeler version - upto 500 N
- Shallow construction
- Mechanical overload protection
- Available with combined hand-held terminal

TECHNICAL SPECIFICATION

Model	HB
Nominal load	0 - 500 N
Accuracy class	0.5 % f.s.
Protection	I P 65
Dimensions	W 26 x L 100 x H 23 mm
Material	aluminium
Sensitivity	1mV/V
Sensor excitation	< + 10 V
Cable length	1.5m
Cable type	FDCY 4 x 0.14 mm ²



DIMENSIONAL DETAILS



WIRING INFORMATION

