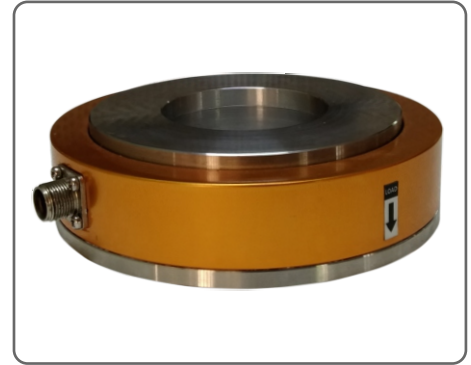


Force Washer Cell - FW

FEATURES

Washer type load cells with central hole are used for measuring force applied in their axial direction.

These washers find application for the indication and for the automatic control and feedback of axial thrusts static and dynamic on punching machines, on machine tools, on presses, on power hammers installed directly or, better, through a thrust spherical plane bearing.



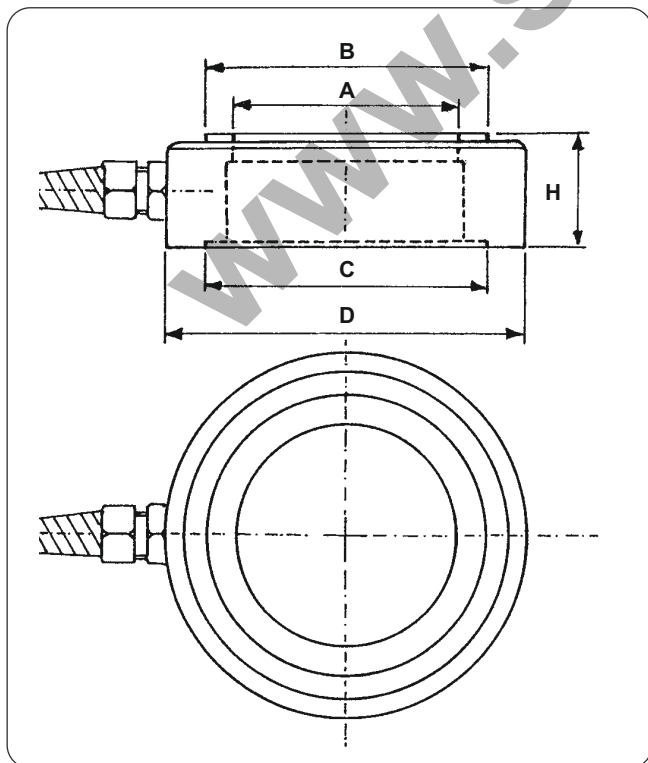
MAIN CONSTRUCTIVE PECULIARITIES:

- Low profile, compactness, high strength, easiness of installation.
- Central hole diameter: large, for standard metric shafts and screws.
- Internal sensors and electrical circuits: entirely stuffed by water-repellent and high insulating filler.

TECHNICAL SPECIFICATION

Model	FW
Measuring ranges	0.5tf ~ 10tf
Total error	$\leq \pm 0.2\%$ FS.
Sensitivity	2 mV/V, typical.
Temperature effect on zero	$\leq \pm 0.1\%$ FS.
Return to zero from FS	$\leq \pm 0.1\%$ FS.
Safe load limit	50% over FS
Creep	$\leq \pm 0.1\%$ FS.
Ultimate load limit	2 times FS

DIMENSION DETAILS



DIMENSION TABLE

Unit : mm

Capacity	D	A	H	B	C
0.5tf, 1tf	49	10.1	26	34	44
2tf	78	30.1	27.5	57	67
5tf	98	40.1	29	75	79
10tf	116	50.1	31	93	92

Specifications are subject to change without Prior notice