

Force Column Radius Internal Thread - FCRT

Force Column Radius Internal Thread Load Cell

FEATURES

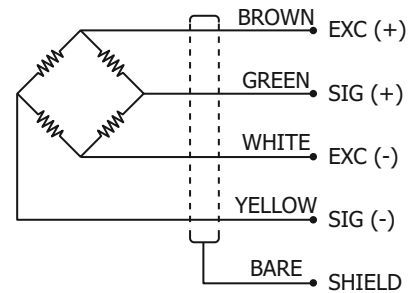
- FCRT Load cells are used for static and dynamic measurements of forces and weights. They can be used for almost all applications in industries. These may be for example:
 - Container, hopper or platform scales
 - Rollway, belt or crane scales
 - Filling/packing plants, proportioning and mixing
 - Filling level and completeness inspection, equipment for monitoring pressing and clamping procedures, dynamic scales
- All applications can be located in areas with mandatory calibration or in hazardous areas.



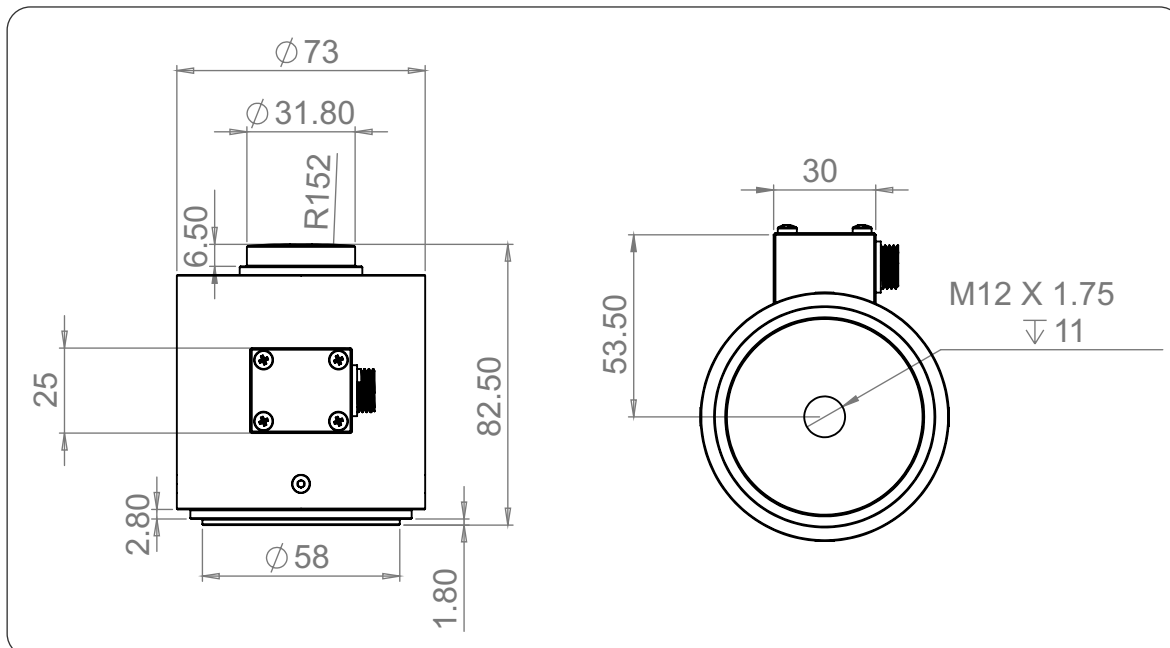
TECHNICAL SPECIFICATION

Model	FCRT
Rated capacity(R.C.)	25tf
Rated output(R.O.)	1mV/V
Nonlinearity	Within 0.5% of R.O.
Hysteresis	Within 0.5% of R.O.
Repeatability	0.15% of R.O.
Creep	0.05% of R.O.
Zero balance	±1% of R.O.
Excitation recommended	10V (max. excitation 15V)
Terminal resistance input , output	350Ω±1%
Insulation resistance bridge	2000MΩ
Temperature range, compensated	-10~60°C
Temperature range, safe	-20~80°C
Temp. effect on rated output	±0.01% of LOAD/10°C
Temp. effect, on zero balance	±0.02% of R.O./10°C
Safe overload	120% R.C..
Cable length	Ø5mm 4core, 2m

WIRING INFORMATION



DIMENSION DETAILS



Specifications are subject to change without Prior notice