

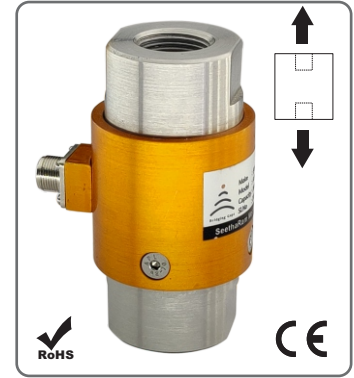
Force Column Internal Tread - FCIT

CANISTER TENSION LOAD CELLS

The FCIT series load cell is ideal for measuring both tensile and compressive forces. The standard metric threads at each end of the load cell are designed to accept standard spherical seating rod-end Bearing.

FEATURES

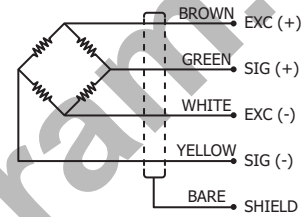
- Model FCIT load cells have Female thread mounting and measure both tension & compression load force.
- High Grade SS 17.4PH construction for resistance against shock and overload.
- Customization to fit your dimensional needs.



APPLICATION

- Line tension measurement
- Hanging type of weighing (E.g. – silos, hopper etc...)
- Force measurement in hydraulic, pneumatic and servo systems
- Calibration of testing machine
- Extrusion process
- Industrial process control

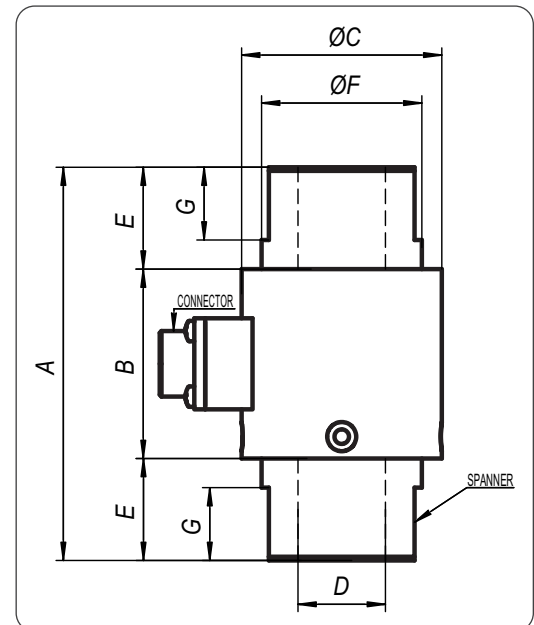
WIRING INFORMATION



TECHNICAL SPECIFICATION

Model	FCIT
Rated capacity(R.C.)	500kgf, 1, 2, 3, 5, 7.5,10tf
Rated output(R.O.)	1mV/V
Nonlinearity	Within 0.5% of R.O.
Hysteresis	Within 0.5% of R.O.
Repeatability	0.15% of R.O.
Creep	0.05% of R.O.
Zero balance	±1% of R.O.
Excitation recommended	10V (max. excitation 15V)
Terminal resistance input , output	350Ω±1%
Insulation resistance bridge	2000MΩ
Temperature range, compensated	-10~60°C
Temperature range, safe	-20~80°C
Temp. effect on rated output	±0.01% of LOAD/10°C
Temp. effect, on zero balance	±0.02% of R.O./10°C
Safe overload	120% R.C..
Cable length	Ø5mm 4core, 3m

DIMENSION DETAILS



DIMENSION TABLE

Unit : mm

Capacity	A	B	ØC	D	E	ØF	G
500 Kgf, 1, 2tf	85	45	36	M12X1.25-20DP	20	30	15
3, 5tf	85	43	45	M20X1.5-22DP	21	38	15
7.5, 10tf	108	52	55	M24X2-29DP	28	44	21

Specifications are subject to change without Prior notice