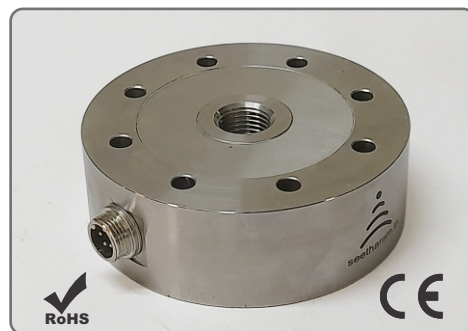


Force Pancake Internal Thread - FPT

Universal Pan Cake Load Cell

FEATURES

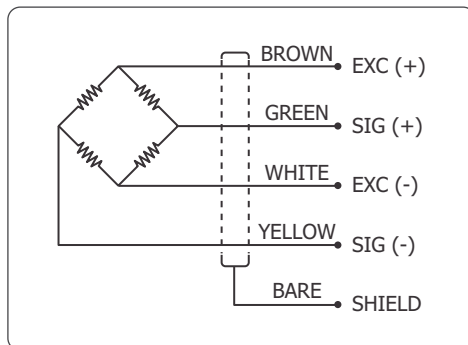
- Model FPT load cells have Female thread mounting and measure both tension & compression load force
- Construction for High Grade SS 17.4PH
- Customization to fit your dimensional needs.



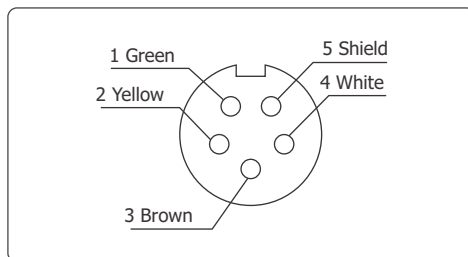
TECHNICAL SPECIFICATION

Model	FPT
Rated capacity(R.C.)	0.1, 0.5, 1, 2, 5, 10tf
Rated output(R.O.)	1mV/V
Nonlinearity	0.5% of R.O.
Hysteresis	0.5% of R.O.
Repeatability	0.2% of R.O.
Creep	0.05% of R.O.
Zero balance	±1% of R.O.
Excitation recommended	10V (max. excitation 15V)
Terminal resistance input, output	350Ω±1%
Insulation resistance bridge	2000MΩ
Temperature range, compensated	-10~60°C
Temperature range, safe	-20~80°C
Temp. effect on rated output	±0.01% of LOAD/10°C
Temp. effect, on zero balance	±0.02% of R.O./10°C
Safe overload	120% R.C..
Connector Cable	Standard Ø5mm 4core, 2mtr Contact Factory for longer length
Ingress Protection	IP65 (for higher rating contact factory)
Weight	995 gms

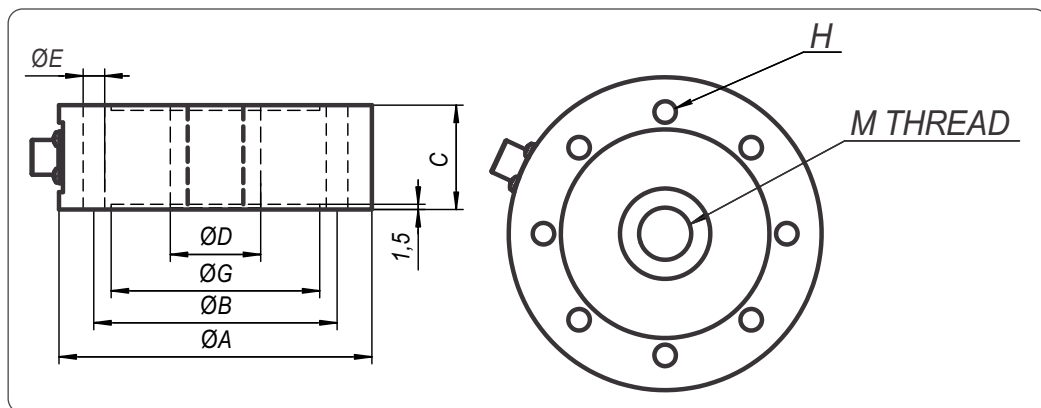
WIRING INFORMATION



5 PIN CONNECTOR



DIMENSION DETAILS



DIMENSION TABLE

Unit : mm

Capacity	A	B	C	D	ØE-H NOH	G	MTHREAD
100 Kg ~ 5tf	90	70	30	26	Ø6.2- 8	60	M16X1.5
7.5, 10, 15tf	115	90	40	45	Ø10.2- 8	77	M30X2

* 5 Pin Female connector with 2 meter cable delivered along with load cell

Specifications are subject to change without Prior notice